

VALVES

**Combination Line / Check Valves**

**Steel, Ring Lock**

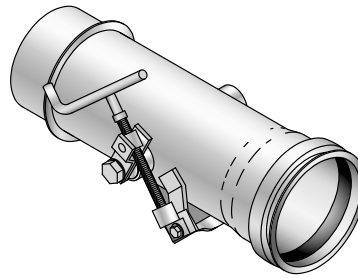
NI Part #	Size
966225	4"
966226	5"
966227	6"
966228	8"
966229	10"
966230	12"



**Butterfly Line Valves**

**Steel, Ring Lock**

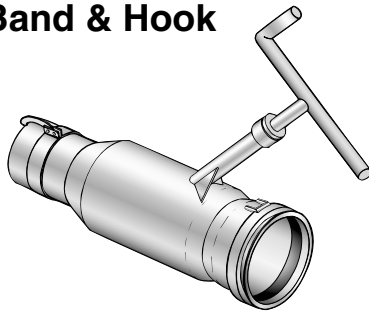
NI Part #	Size
966381	6"
966297	8"
966366	10"
966374	12" *



\* NOTE: 12" utilizes a 10" body.

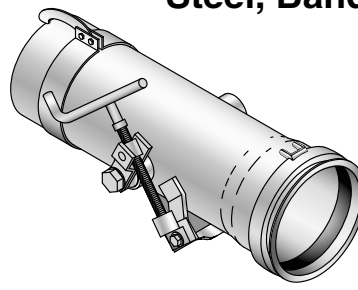
**Steel, Band & Hook**

NI Part #	Size
966231	3"
966232	4"
966233	5"
966234	6"
96690	8"
966236	10"



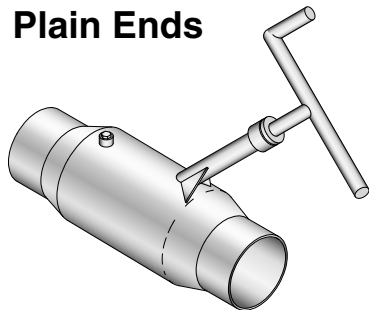
**Steel, Band & Hook**

NI Part #	Size
966124	4"
966338	6"
966321	8"
966365	10"



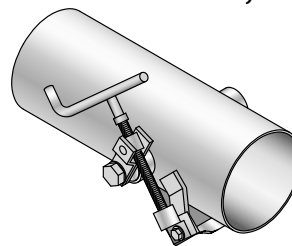
**Steel, Plain Ends**

NI Part #	Size
966227-PLA	6"
966228-PLA	8"
966229-PLA	10"



**Steel, Plain Ends**

NI Part #	Size
966379	4"
96692	6"
96693	8"
966346	10"



**Replacement Parts**

**For Line/Check Combo Valves**

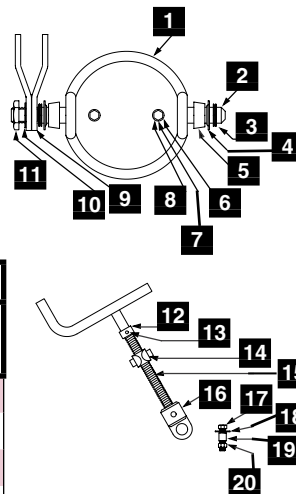
NI Part #	Description
65016	Handle – <i>specify size</i>
570348	Packing
325103	Clacker, 3"
325104	Clacker, 4"
325105	Clacker, 5"
325106	Clacker, 6"
325108	Clacker, 8"
325110	Clacker, 10"
325112	Clacker, 12"

**Replacement Parts**

**For Butterfly Line Valves**

Disc Only, Item 1	
NI Part #	Description
47013	Disc, 4" Butterfly
47012	Disc, 6" Butterfly
47000	Disc, 8" Butterfly
47020	Disc, 10" Butterfly

Repair Kits, Items 1–20	
NI Part #	Description
72541	Kit, 4" Butterfly Repair
72542	Kit, 5" Butterfly Repair
72543	Kit, 6" Butterfly Repair
72539	Kit, 8" Butterfly Repair
72540	Kit, 10" Butterfly Repair



Item	Description
1	Disc
2	Shaft
3	Retainer Ring
4	Reducing Washer
5	Chevron Gasket
6	Stainless Bolt
7	Concave Washer
8	Brass Nut
9	Linkage Arm
10	Star Washer
11	Jam Nut
12	Thrust Bearing
13	Roll Pin
14	Thrust Nut
15	Stem
16	Yoke
17	Bolt
18	Washer
19	Ferrule
20	Nut

G