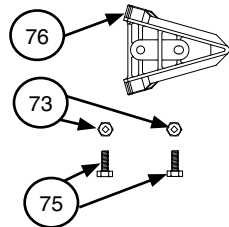
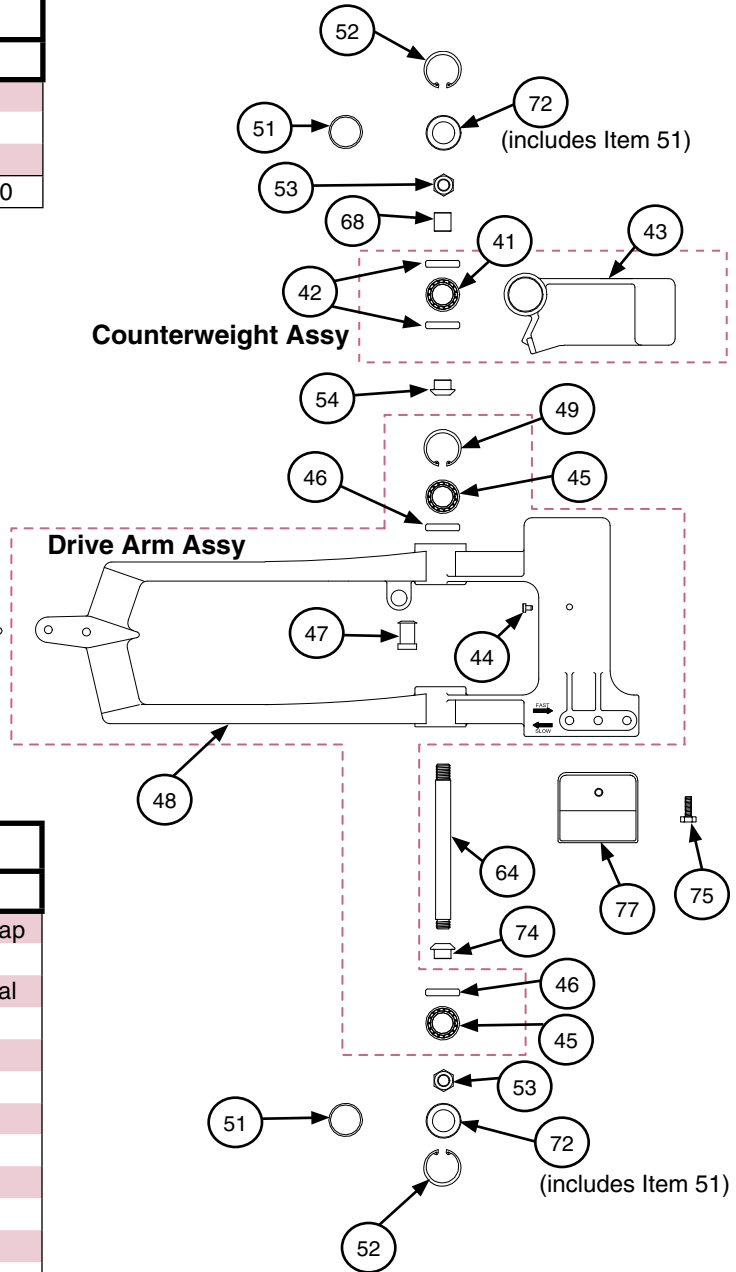


SPRINKLER PARTS

Nelson SR100 End Gun Parts — 64001, 64009 (continued)

Counterweight Assembly, SR100			
Item	NI Part #	Qty	Description
41	17011	1	Bearing, Ball, 12 x 32 x 10 mm
42	91178	2	Seal, Oil
43	14577	1	Counterweight — SR100
	14583	1	Counterweight Assembly — SR100

Drive Arm Assembly, SR100			
Item	NI Part #	Qty	Description
44	69005	1	Insert, Rest Pad
45	17011	2	Bearing, Ball, 12 x 32 x 10 mm
46	91178	2	Seal, Oil
47	85019	1	Bumper
48	12005	1	Arm, Drive — SR100
49	898XX	1	Ring, Retaining, -125 Basic Internal, Coated
	12045	1	Drive Arm Assembly — SR100



Final Assembly Components, Part 1			
Item	NI Part #	Qty	Description
50	20023	2	Screw, .312-18 x 1.00", Hex Hd Cap
51	89886	2	O-Ring, -.024
52	89857	2	Ring, Retaining, -125 Basic Internal
53	82024	2	Nut, .438-20 Special
54	918XX	1	Spacer, Brkt. to Cwt — F100
55	33025	2	Clamp - SR100
56	85018	1	Pin, Cotter, .062 x .50"
57	92670	1	Guide, Spring — SR100
58	93207	1	Stop, CCW — SR100
59	93209	1	Stop, CW — SR100
60	27036	1	Cap, Trip Lever — SR100
61	570176	1	Gasket, Trip Lever Cap — SR100
62	570177	1	Gasket, Shift Lever Cap — SR100
63	92630	1	Spring, Trip — SR100
64	90256	1	Shaft, Drive Arm — SR100
65	91014	4	Screw, #8-32 x .375", Self-Tapping Pan Head
66	89864	1	Ring, Retaining, -31 Basic External
67	89865	1	Ring, Retaining, -66 Basic External
68	91812	1	Spacer, Drive Arm to Cwt
69	97222	1	Washer, Roller — SR100
70	93211	1	Stop, Trip Spring
71	65005	2	Flex Handle Assembly
72	27033	2	Cap Assy, Arm Bearing — SR100 (Includes Item 51)

Final Assembly Components, Part 2			
Item	NI Part #	Qty	Description
73	82017	2	Nut, .23-20 Finished Hex
74	91810	1	Spacer, Drive Arm to Shaft Lever — SR100/150
75	20032	3	Screw, .25-20 x .75" Hex Head Cap
76	96803	1	Vane, Drive — SR75/SR100
77	12044	1	Weight, Drive Arm — SR100
78	270XX	1	Cap, Assy, Shift Lever — SR100 (Includes Item 62)