

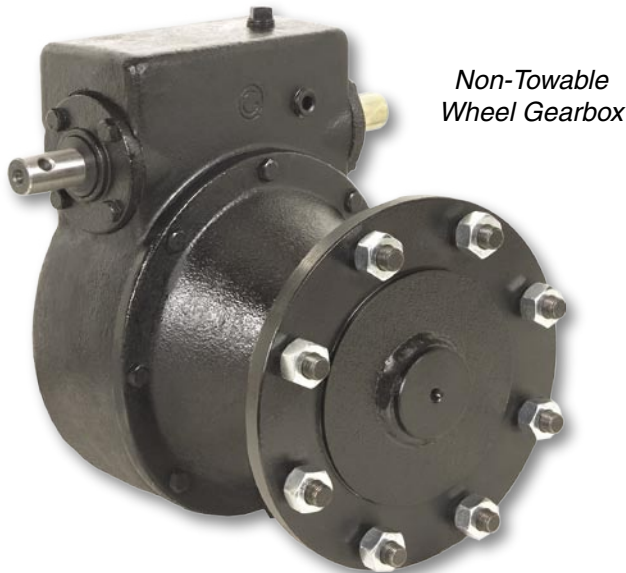
WHEEL GEARBOXES

Omni Wheel Gearboxes

Specifications for Worm Gear Wheel Drives (continued)

Big Chamber™

610505



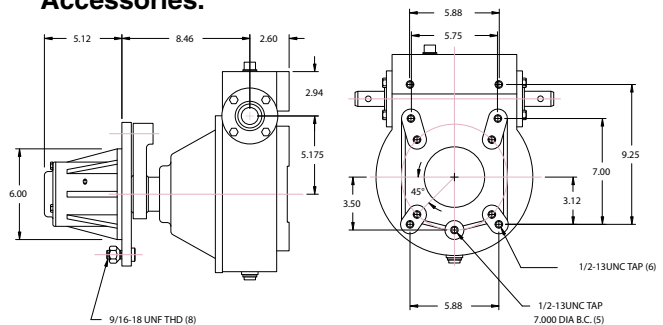
Non-Towable Wheel Gearbox

True-Tow Towable

610507



See page 36 for Towable Gearbox Accessories.



Specifications for Big Chamber™ — 610505

Category	Description
Torque Capacity	70,000 lb.-in. (7,909 Nm)
Ratio	50:1 (others available)
Shaft Size	2.25" (57 mm)
Weight	110 lbs. (49.0 kg)
Oil Capacity	126 fl. oz. (3.7 L)
Expansion Chamber	Big Chamber™
Additional Features	
<ul style="list-style-type: none"> • DPS-100 Gearbox Guard mounts easily. • 39 cubic inch expansion area. • Oil level plug eliminates overfilling. • Replaces Durst and Zimmatic drives. 	

Heavy-Duty

610508

Non-Towable Wheel Gearbox, Equal to Durst A110

Specifications for Heavy-Duty — 610508

Category	Description
Torque Capacity	90,000 lb.-in. (10,170 Nm)
Ratio	50:1 (others available)
Shaft Size	2.5" (65 mm)
Weight	164 lbs. (74.4 kg)
Oil Capacity	215 fl. oz. (6.3 L)
Expansion Chamber	Bellows Type
Additional Features	
<ul style="list-style-type: none"> • High capacity thrust bearings on worm. • Highest torque wheel drive available. • Ideal for hose drag linear carts. • 6.1" (156 mm) gear center distance. 	

Specifications for True-Tow Towable — NI # 610507

Category	Description
Torque Capacity	70,000 lb.-in. (7,909 Nm)
Ratio	50:1 (others available)
Shaft Size	2.25" (57 mm)
Weight	130 lbs. (58.9 kg)
Oil Capacity	126 fl. oz. (3.7 L)
Additional Features	
<ul style="list-style-type: none"> • External Expansion or Big Chamber™ housing. • True towable design eliminates add-on kits. • Relief plug protects from over-greasing. • Adjustable bearing lock nut eliminates shims. • Cross-drilled pin easily stows while towing. 	

NI Part #	Description
610509	Gearbox, NI, Quick-Tow/Non-Towable, Dual Input, 50:1, 2.25" Output

Additional Models are available. Please contact our sales office for more information.