

WHEEL GEARBOXES

Durst Wheel Gearboxes

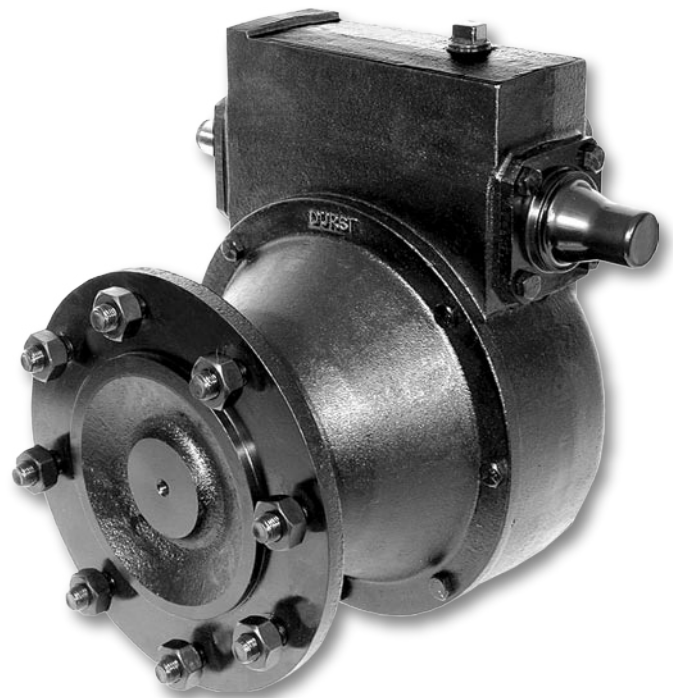
Outstanding Features and Benefits

- 13-hole universal mount pattern — the most versatile in the industry. Fits multiple brands of lateral and center pivot systems.
- Input and output Trakseals – a rotational multi-lip seal that prolongs the life of the gears, shafts, and bearings. Keeps oil in and contaminants out.
- Dual input worm shaft provides versatility.
- The highest strength bull gear on the market.
- One-piece large diameter, high strength output shaft with wheel support ring.
- Designed to handle the heaviest spans in the industry.
- Totally enclosed internal air expansion chamber.
- Manufactured in an ISO 9000 certified factory ensures the highest quality standards.
- Every unit is date coded for accurate tracking.

Durst Extreme Duty Gearbox, 50:1

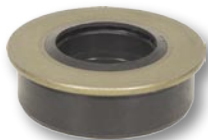
C In addition to the features listed above, the Extreme Duty Gearbox also features:

- Replaces most 50:1 gearboxes.
- Ductile steel end caps – 40% stronger.
- Independent testing proves the new Durst wheel drive is 30% stronger than the competition.
- Built-in expansion chamber with oil fill sump – prevents lube over-fill and eliminates excessive pressure build up.
- Shaft protector snaps onto either end to protect the unused shaft.



Durst Extreme Duty Gearbox, 50:1
610103

NI Part #	Description
610103	Gearbox, Durst, Extreme Duty, Non-Towable, Dual Input, 50:1, 2-1/4" Output, with Trakseals on input and output shafts



Input Trakseal™



Output Trakseal™

Durst Gearboxes feature Trakseals™ on the input and output shafts.

610103 Dimensions

