

WHEEL GEARBOXES

Durst Wheel Gearboxes (continued)

Durst Valley Style Gearbox, 52:1

In addition to the features listed on the previous page, the Valley Style Gearbox also features:

- Direct replacement for Valley's 52:1 gearbox and features interchangeable parts.
- Highest strength threaded end cap in the industry.
- Dyno-Lab testing proves this wheel drive is the strongest 52:1 gearbox in the industry.
- Built-in expansion chamber with side fill port for easy serviceability.

Also Available:

Durst Valley Style Gearbox, 50:1

With all the features listed above and on the previous page, this Valley Style Gearbox has a 50:1 gear ratio and standard short output shaft.

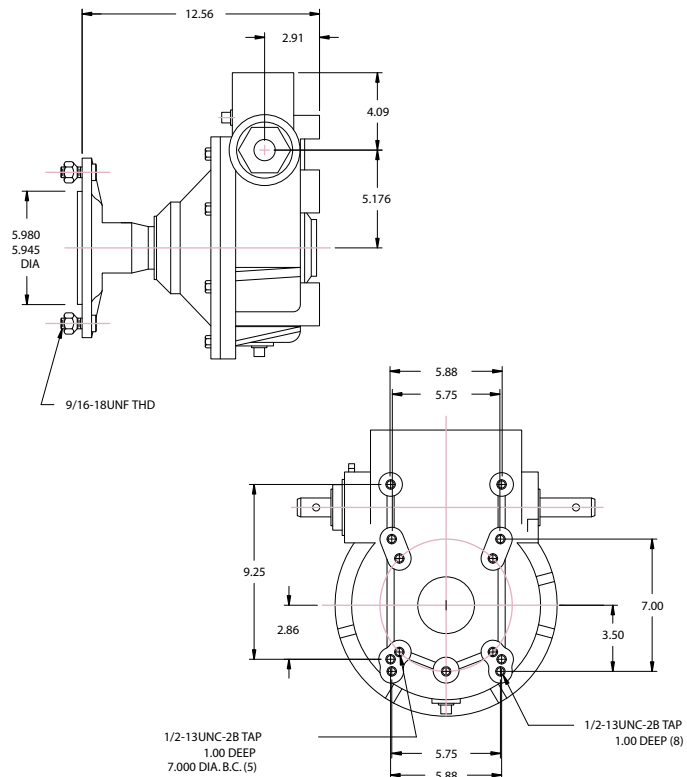


Durst Valley Style Gearbox, 52:1
610104



NI Part #	Description
610104	Gearbox, Durst, Valley Style, Non-Towable, Dual Input, 52:1, 2-1/4" w/ Long Tapered Output, with Trakseals on input and output shafts
610105	Gearbox, Durst, Valley Style, Non-Towable, Dual Input, 50:1, 2-1/4" w/ Standard Short Output Shaft, with Trakseals on input and output shafts.

610104 Dimensions



Input Trakseal™



Output Trakseal™

Durst Gearboxes feature Trakseals™ on the input and output shafts.