

FITTINGS

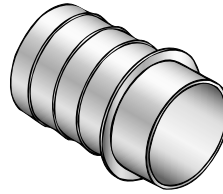
Hose Barbs

Female Hose Barb



NI Part Number		Size
Aluminum	Steel	
15801	15805	4"
15802	15806	6"
15803	15807	8"
15804	15808	10"

Male Hose Barb



NI Part Number		Size
Aluminum	Steel	
15809	15813	4"
15810	15814	6"
15811	15815	8"
15812	15816	10"

Pipe Repair Clamps

NI Part #	Description
330162	4" O.D. x 9" Long
330163	5" O.D. x 9" Long
330164	6" O.D. x 9" Long
330165	6-5/8" O.D. x 9" Long
330172	7" O.D. x 9" Long
330167	8" O.D. x 9" Long
330168	8-5/8" O.D. x 9" Long
330169	10-3/4" O.D. x 9" Long
330170	12-3/4" O.D. x 9" Long

Stainless steel repair clamps are ideal when you want to move saddle meter from one location to another.

Pipe repair clamps can also be used to repair steel or plastic pipe above ground or under ground.

Cooling Coil

with Coupler, Faucet Outlet, & ARV Outlet

NI Part #	Description
36050	6" x 54" — 60 to 80 hp
36051	6" x 72" — 80 to 100 hp
36052	8" x 36" — 60 to 75 hp
36053	8" x 54" — 75 to 100 hp
36054	8" x 72" — 100 to 120 hp
36055	10" x 54" — 100 to 120 hp
36056	10" x 72" — 125 to 150 hp

Cooling Coil Accessories

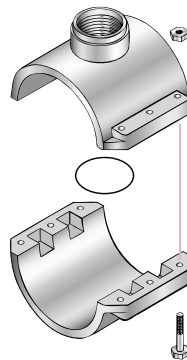
NI Part #	Description
27021	Cap, Cooling Coil, 6"
966132	Valve, Faucet, 1/2"
96628	Valve, Faucet, 3/4"

Saddle Fittings for Irrigation Pipe

- For IPS and PIP and OD steel pipe.
- Made of steel with epoxy or galvanized coating.
- Includes gaskets, bolts, and nuts.

Easy to Install

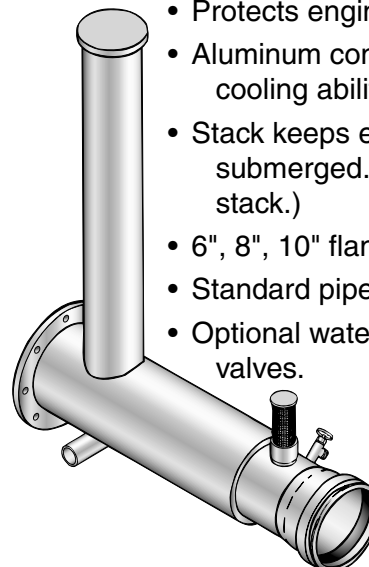
1. Install "O" ring.
2. Position saddle halves on pipe.
3. Bolt together.
4. Drill hole in pipe with hole-saw bit.



Please call our sales office for sizes available.

Features and Benefits

- Protects engine from overheating.
- Aluminum construction for superior cooling ability.
- Stack keeps engine's water pump submerged. (Also available w/o stack.)
- 6", 8", 10" flanges are standard.
- Standard pipe & hose connections.
- Optional water faucets & relief valves.



G