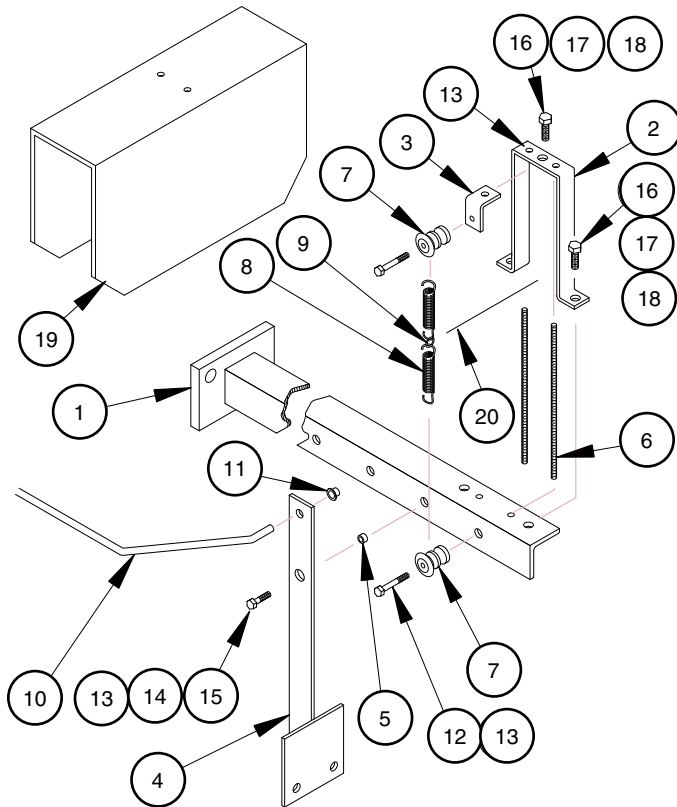


TOWER CONTROL BOX PARTS

NI Replacement Parts for:

Lockwood Wire Alignment Safety & Damper Assembly



Item	NI Part #	Qty	Description
1	22824	1	Bracket, Alignment Angle
2	22822	1	Bracket, Shield
3	22823	1	Bracket, Spring
4	22825	1	Arm, Vane
5	17037	1	Bushing, Sintered
6	20090	2	Bolt, Take-Up, 1/4
7	70002	2	Insulator
8	92613	2	Spring, Tension
9	89832	1	Ring, Spring
10	75007	1	Link, Fixed Alignment
11	27018	1	Cap Nut, Push-On
12	20091	2	Bolt, Hex, 1/4"-20 UNC x 2", Gr. 5
13	82044	5	Nut, Hex, 1/4"-20 UNC
14	20022	1	Bolt, Hex, 1/4"-20 x 1-1/8" Gr. 5
15	97285	1	Washer, Flat, 1/4" (not shown)
16	82046	3	Nut, Hex, 5/16-18 UNC (not shown)
17	20057	3	Bolt, Hex, 5/16-18 UNC x 1, Gr. 5
18	97270	3	Washer, Lock, 5/16" (not shown)
19	90617	1	Shield
20	98201	--	Wire, Alignment, Galvanized, 1400'

NI Part #	Description
22801	Bracket, Safety, First Tower
92615	Spring, Tension, Last Tower
70003	Insulator, Safety
98201	Wire, Alignment, Galvanized, 1400'

Other items are available – call us for information.

For more information on the Lockwood alignment assembly and tower control boxes, see Section D: Controls, page 46.